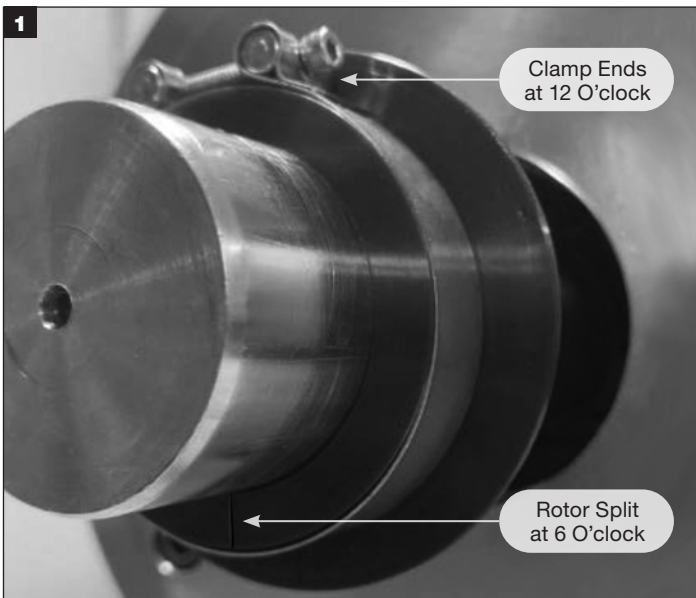


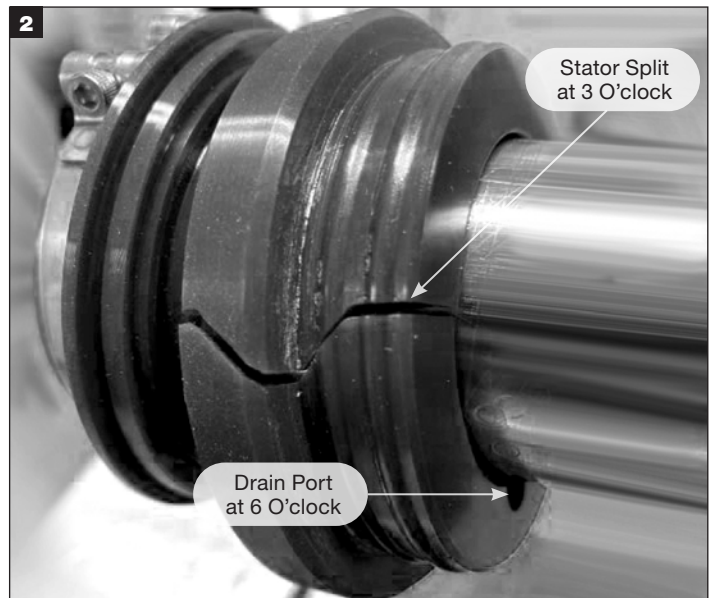
# Split Polymer Labyrinth Seal (SPLS)

## SEAL INSTALLATION

**NOTE:** Clean bore and shaft of all debris and contaminants.



Split open the rotor and pass over the shaft. Install the clamp inside the rotor groove. **DO NOT TIGHTEN CLAMP SCREW.**



Split open the stator and nest onto the rotor assembly.



Press both stator and rotor as a unit inside the bore uniformly.



Ensure both rotor and stator are axially flush.

## SPLIT POLYMER LABYRINTH SEAL (SPLS) INSTALLATION cont.

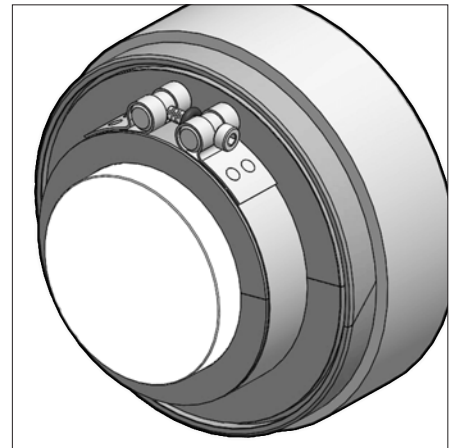
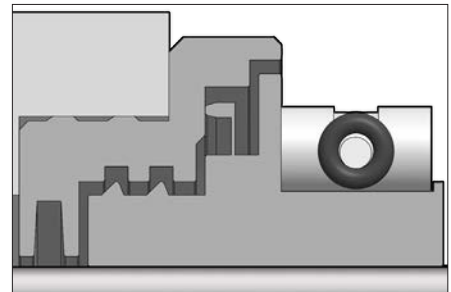
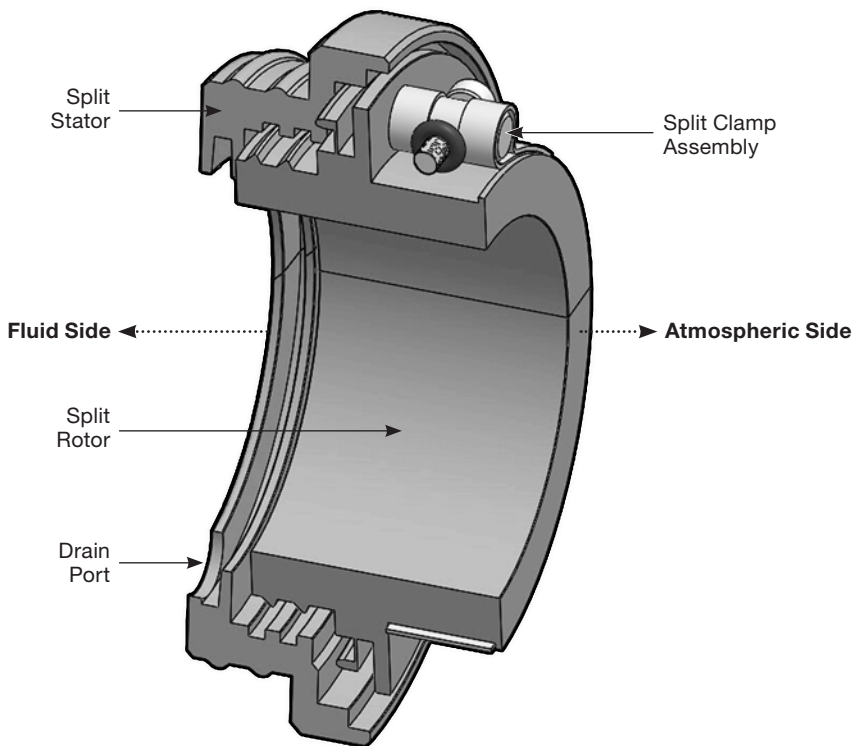


### NOTE:

For equipment without a thru-bore hole, drill a hole to accommodate the drain port at the 6 o'clock position.

The Split Polymer Labyrinth Seal (SPLS) is manufactured from a material that is known to be compatible with mineral, synthetic, and biodegradable oils most commonly used in bearings and gearboxes. There could be, as with all polymer-based materials, a few exceptions to this statement however we have not encountered any applications that have posed compatibility issues. If you are uncertain or have questions relating to material compatibility please contact EPS (Engineered Polymer Solutions) application engineering.

Holding the rotor flush against the stator **TIGHTEN CLAMP SCREW TO 3 lbf.in (.34 N.m)**



DISTRIBUTED BY:

Chesterton ISO certificates available on [www.chesterton.com/corporate/iso](http://www.chesterton.com/corporate/iso)

860 Salem Street  
Groveland, MA 01834 USA  
Telephone: 781-438-7000 Fax: 978-469-6528  
[chesterton.com](http://chesterton.com)

© 2022 A.W. Chesterton Company.  
® Registered trademark owned by A.W. Chesterton Company  
in USA and other countries, unless otherwise noted.

FORM NO. EN35802

2/22